

# Inspired by today Built for tomorrow

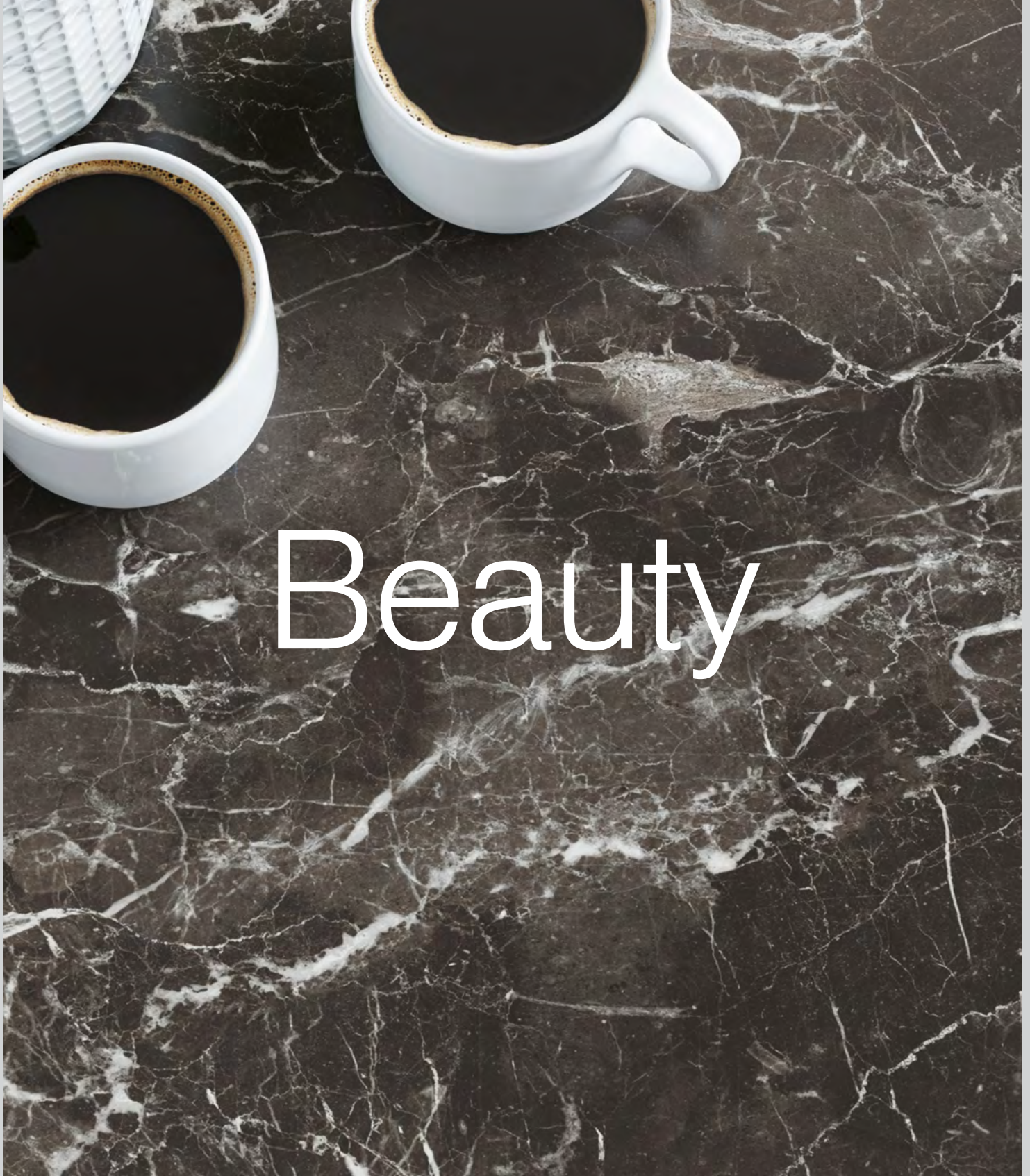




## Contents

2	Contents	9	Kitchen Splashback	36	Slim Line
3	Introduction	10	Worktop Upstands	38	Beautifully Designed
4	Matching Top and Front	11	Worktop Edging	40	Summary
5	Repeat Free Design	12	Practical, Durable & Beautiful	41	Textures
6	Worktop Round Edges	14	Stone	42	Caring for your Worktop
7	Worktop Square Edges	22	Concrete & Steel	43	Sustainability
8	Worktops Slim Line	28	Wood		

K553 SU  
Galaxus



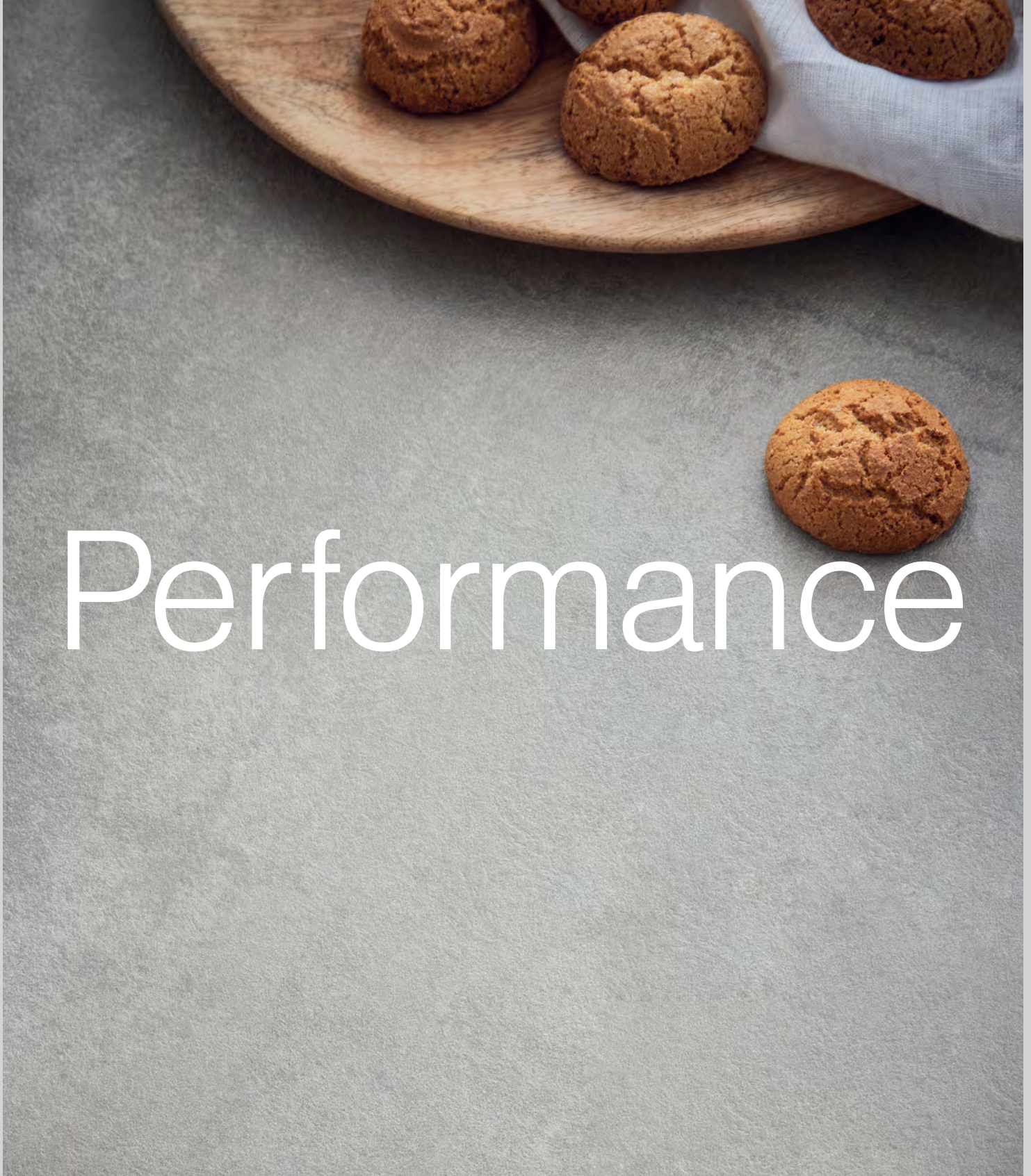


The choice of worktops plays a vital role in the creation of dream kitchens. It is why our selection of stunning finishes ranges from distinctly traditional to bang on trend, ensuring we offer you the best of classic and contemporary design. However, attraction is deeper than exquisite looks.

That is why our worktops are designed and constructed using the latest technology and sustainable materials, providing the highest level of performance.

**Beautiful designs, solid construction, at a reasonable price.**

K200 RS  
**Light Grey Concrete**



# Performance



# Matching Top and Front

Design available on both MF Boards and Worktops.



See our  
complete  
Krono<sup>®</sup>design  
collection:



K535 RW  
Gold Baroque Oak



K538 PN  
Dovetail Arosa





# Repeat Free Design

No repetition of the design across  
the full length of the Worktops.



## Key:



MF Boards



Edgebanding



Worktops  
Slim Line



Worktops  
Round Edge



Worktops  
Square Edge

K552 SKU  
White Iceberg Marble





# Worktop Round Edges

We offer a wide variety of worktop designs that have been carefully matched with the most appropriate profile to enhance the look of your kitchen, work or commercial area.

Our Round Edge Worktops: available in 34 decors, are based on raw particleboard covered with a decorative HPL laminate making them ideal for counters in kitchens, offices and shops. They also feature a special High Density Fiberboard strip which strengthens the front edge of the worktop.

This technical innovation enhances the quality of the profile and increases the impact resistance of the board. There is a special silicone strip underneath the profiled edge along the entire worktop length, forming a drip barrier and keeping out water.

**Available in 4100 x 600 worktops  
and 4100 x 900 breakfast bars.**



## Application



Kitchen  
Tops

## Features



Stain  
resistant



Easy  
to clean



Hygienic



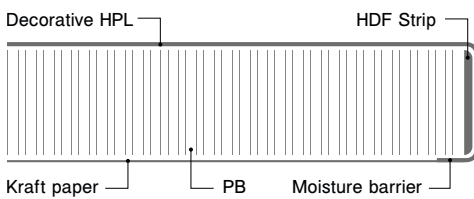
Heat  
resistant



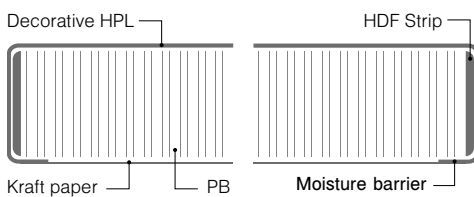
Antibacterial  
surface

## K023 SU Venato

Supplied with a slightly rounded 3.3mm radius U-shaped profile, and also available with a double-sided U-shape profile, for breakfast bars and centrepiece kitchen islands.



**Profile U**  
R=3.3mm



**Profile U-U**  
R=3.3mm

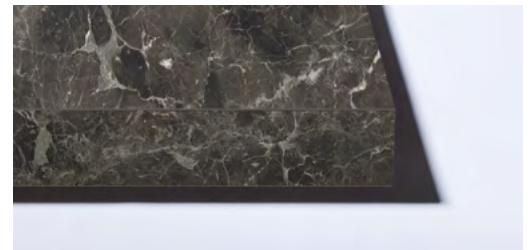




K553 SU  
Galaxus

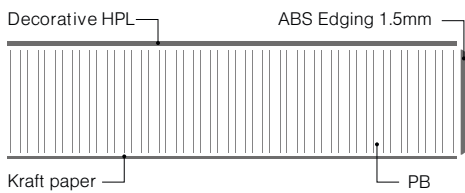


# Worktop Square Edges

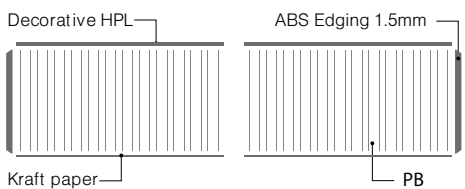


This modern looking worktop features a straight edge and an edgbanding that gives a sturdy, square look. The simple, clean lines make these worktops perfect for any contemporary or minimalist kitchen design and are available in 26 of our decors.

**Available in 4100 x 600 worktops  
and 4100 x 900 breakfast bars**



**ABS Square Edge**



**ABS Square Edge  
Breakfast Bar**

### Application



Kitchen  
Tops

### Features



Stain  
resistant



Easy  
to clean



Hygienic



Heat  
resistant



Antibacterial  
surface



K023 SU  
Venato

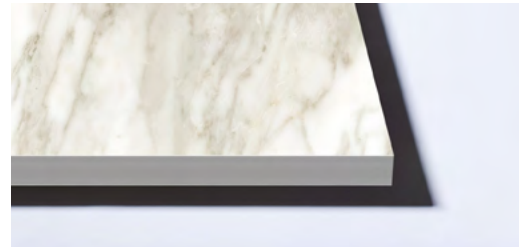
# Worktops

## Slim Line

Slim Line is an exclusive collection of 12mm compact boards with a matching core, ideal for upmarket furniture and interior projects. Appropriate for horizontal and vertical use, it introduces specially selected designs that bring style to any application, available in 8 Slim Line decors.

The Slim Line products have improved resistance to abrasion and moisture, function well and look good. They do not need additional edging of surface finish processing, which make them perfect for bespoke kitchen, bathroom, office or work spaces.

**Available in 4100 x 1300 x 12  
and 4100 x 650 x 12**



### Application



Kitchen  
Tops



Interior  
Tops

### Features



Stain  
resistant



Water  
Resistant



Hygienic



Heat  
resistant



Antibacterial  
surface

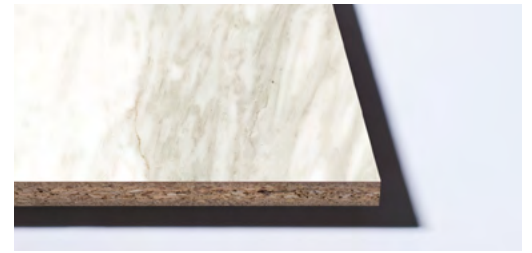


Impact  
Resistant

# Kitchen Splashback

Coordinated Splashbacks provide the finishing touch to worktops in kitchens, offices or work areas. Connecting the worktop with the upper cupboard line in the kitchen, they protect the walls behind the work surface and add an extra decorative touch. Splashbacks are made for vertical use, from decorative HPL pressed onto particleboard, and with a perfect match for every worktop in the Kronodesign® range.

**Available in 4100 x 640 x 10mm**



## Application



Kitchen  
Splashbacks

## Features



Stain  
resistant



Easy  
to clean



Hygienic



Heat  
resistant



Antibacterial  
surface

K023 SU  
Venato





# Worktop Upstands

When changing any aspect of your kitchen, accessories are important to consider as they have a huge impact over the finished look. Our upstand range creates a perfect finish between the worktop and the wall.

They are designed to match the worktop to create a neat and seamless finish and are a great alternative to tiling.

## Application



Kitchen  
Tops

## Features



Stain  
resistant



Easy  
to clean



Hygienic



Heat  
resistant

K349 RT  
**Silk Flow**



K200 RS  
**Light Grey Concrete**

# Worktop Edging

Worktop edging is used for finishing ABS and round edge worktops. It has both decorative and protective properties and is perfectly matched for colour and texture with Kronospan's products.



Above:  
**Worktops HPL Edging:**

Used for finishing the profiles of Post-Formed worktops, the HPL Edging is decorative and protective at the same time and perfectly matched for colour and texture with Kronospan's products.

**Size: 1200 x 38 x 0.60mm**



Left:  
**Worktops ABS Edging:**

A thermoplastic product used for finishing the ABS Square Edge worktops. It has both decorative and protective properties and is perfectly matched for colour and texture with Kronospan's products.

**Size: 1300 x 43 x 1.5mm**

# Download the Kronodesign<sup>®</sup> Mobile App

Create stunning layouts with the newest features of our mobile app. Use your own images and mix and match them with our new decors.

**Your designs, your way.**





# Practical, Durable and Beautiful

Warm and welcoming, cool and contemporary, modern and minimal: the choice of worktops plays an important role in inspiring the style of a kitchen.

Taking influences from around the globe, talking to designers and staying on – if not ahead of – trends in interior design, our Kronodesign® team ensures the quality of our designs matches the quality of our manufacturing, creating worktops that exceed your expectations.

1. K551 SU  
**Calacatta Olympus**
3. K553 SU  
**Galaxus**
3. K552 SU  
**White Iceberg Marble**
4. K353 RT  
**Charcoal Flow**
5. K544 RW  
**Hazel Silverjack Oak**



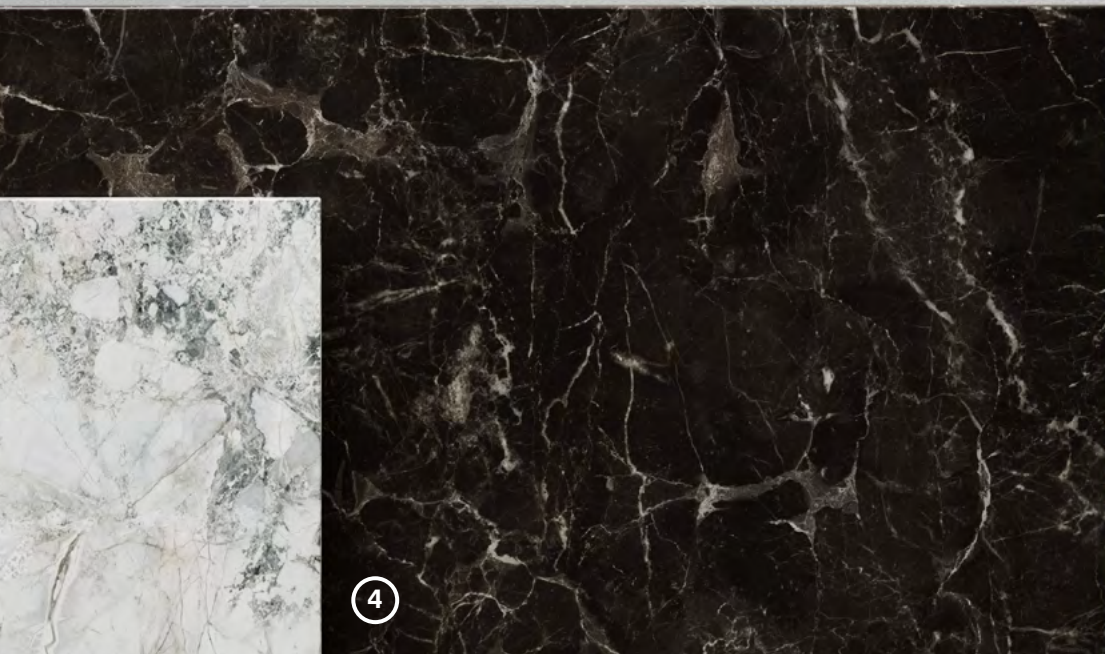




3



5



4





# Stone

## A Timeless Finish

It is the look, the feel, and the solidity of stone that has made it a timeless finish – we can offer all those qualities without the substantial weight or considerable costs.

Our range of shades, tones and textures suits any kitchen scheme, capturing the timeless beauty of stone.

K538 PN  
**Dovetail Arosa**



K550 SL  
**Dove Venera**











K369 PH  
**Cloud Nebula**

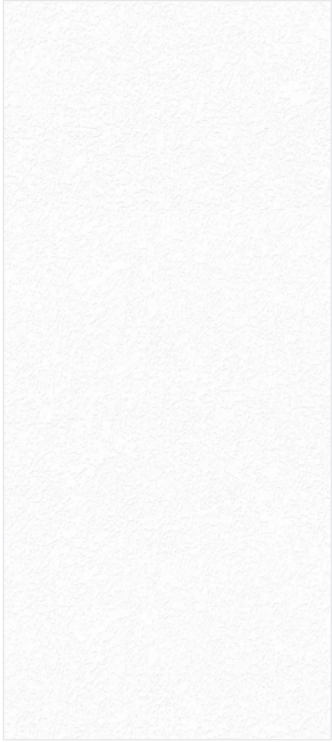


K368 PH  
**Grey Atlantic Marble**

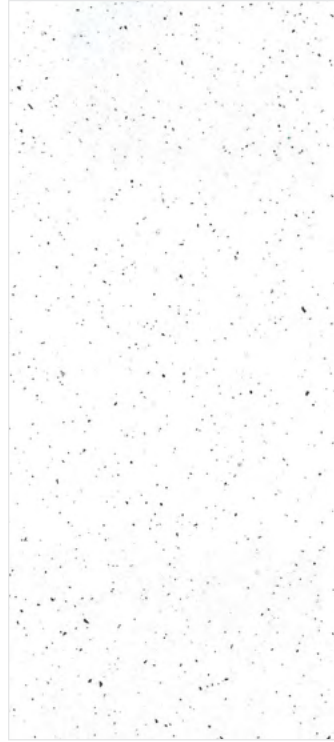




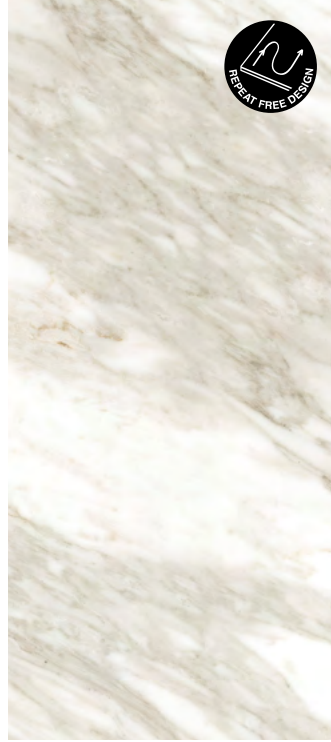
# Stone



8685 RS  
Snow White



K217 GG;GM  
White Andromeda



K023 SQ;SU  
Venato



K095 SU  
Light Terrazzo Marble



K209 RS  
Crema Limestone



K367 PH  
Cream Navona



K212 PA  
Beige Royal Marble



K369 PH  
Cloud Nebula





**Key:**



MF Boards



Worktops  
Round Edge



Worktops  
Slim Line



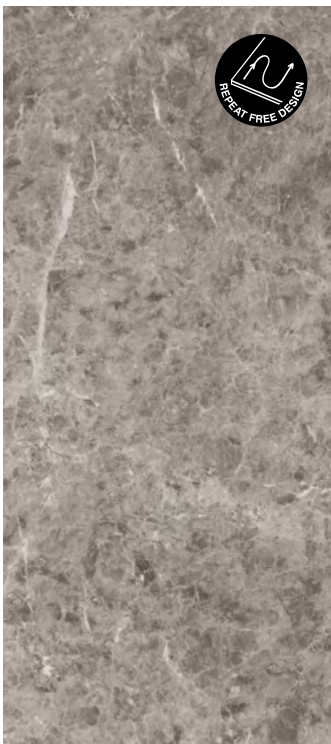
Edgebanding



Worktops  
Square Edge



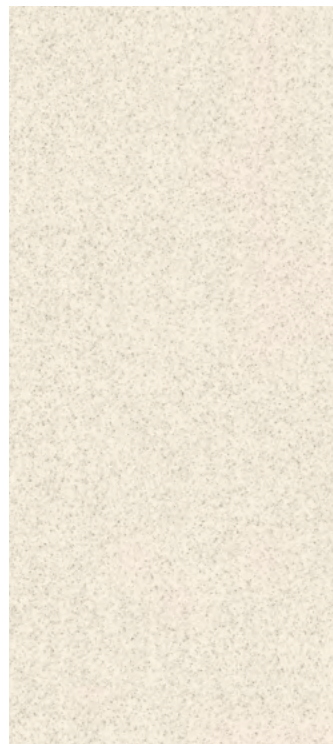
K367 PH  
Cream Navona



K093 SL  
Grey Emperador Marble



K204 PE  
Classic Granite



K215 BS  
White Dunes



K214 RS  
Light Tivoli





# Stone



K207 RS  
Grey Galaxy



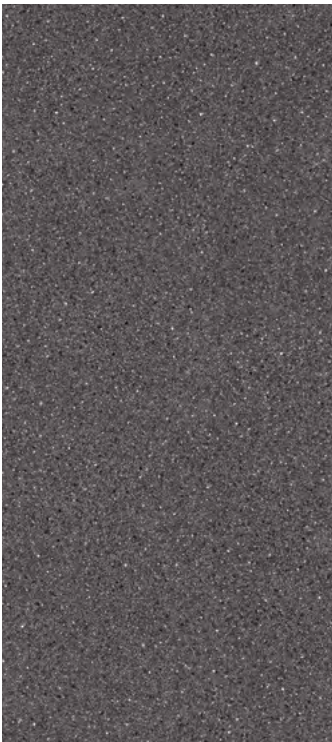
K213 RS  
Dark Tivoli



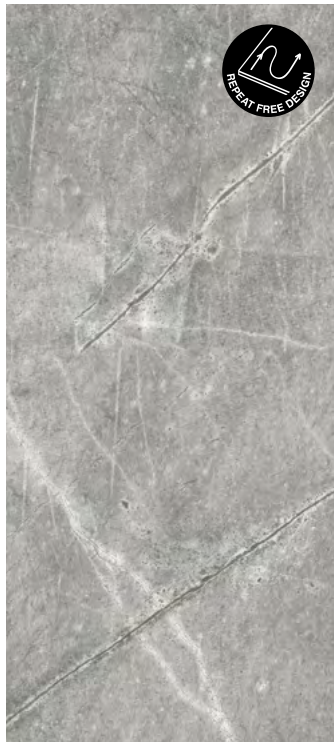
K539 PN  
Fossil Arosa



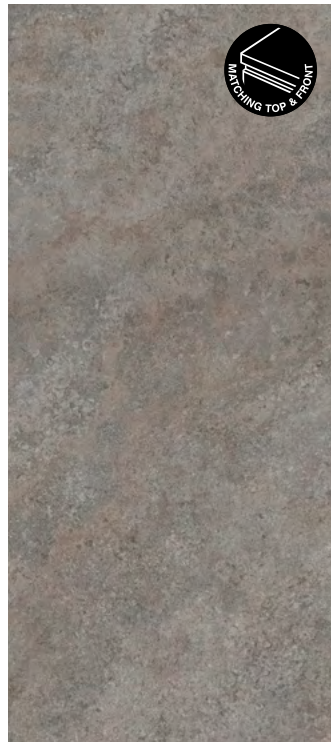
K538 PN  
Dovetail Arosa



K203 PE  
Anthracite Granite



K368 PH  
Grey Atlantic Marble



K540 PN  
Grey Albus



K549 SL  
Sand Venera





**Key:**



MF Boards



Worktops  
Round Edge



Worktops  
Slim Line



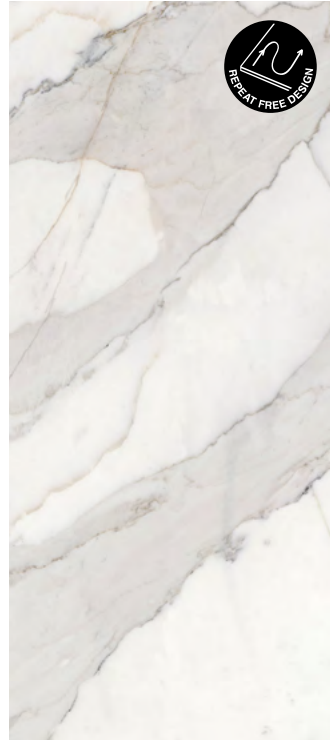
Edgebanding



Worktops  
Square Edge



K550 SL  
Dove Venera



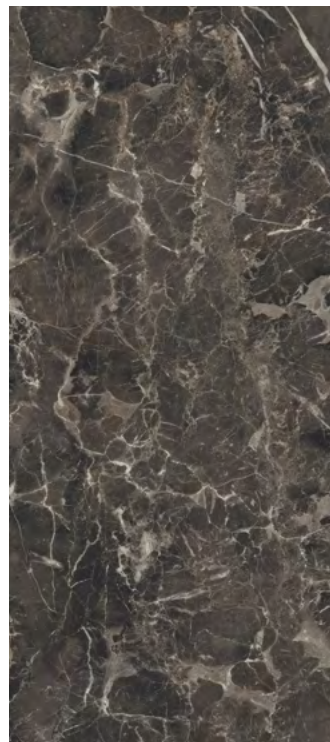
K551 SU  
Calacatta Olympus



K368 PH  
Grey Atlantic Marble



K552 SU  
White Iceberg Marble



K553 SU  
Galaxus



K210 PE  
Black Flint



K218 GG; GM  
Black Andromeda





# Concrete & Steel

## Industrial Chic

The concrete and steel that is omnipresent in modern city centres is the inspiration for our range of concrete and steel design worktops. It is your chance to have the coveted industrial aesthetic without the cleaning and maintenance.

Make a statement in your kitchen with the choice of unique shades and textures that create impactful but practical versions of this much wanted contemporary look while incorporating affordability, quality and performance.

K523 PE  
**Platinum Disk**



K353 RT  
**Charcoal Flow**











K200 RS  
Light Grey Concrete



K352 RT  
Iron Flow



K351 RT  
Rusty Flow





# Concrete & Steel



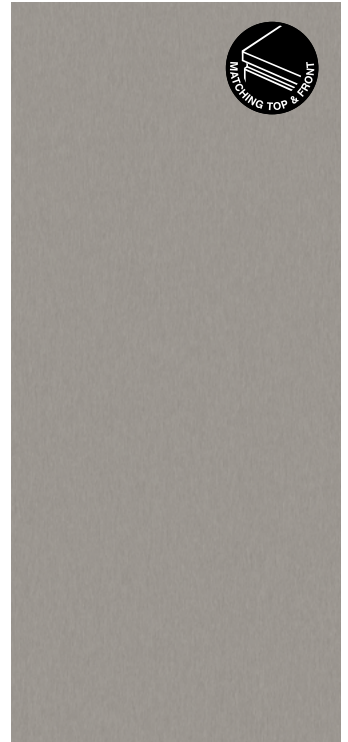
K349 RT  
Silk Flow



K028 SU  
Portland



4298 UE  
Light Atelier



K523 PE  
Platinum Disk



K200 RS  
Light Grey Concrete



K352 RT  
Iron Flow



7045 RS  
Satin



K350 RT  
Concrete Flow



**Key:**



MF Boards



Worktops  
Round Edge



Worktops  
Slim Line



Edgebanding



Worktops  
Square Edge



**K352 RT**  
**Iron Flow**



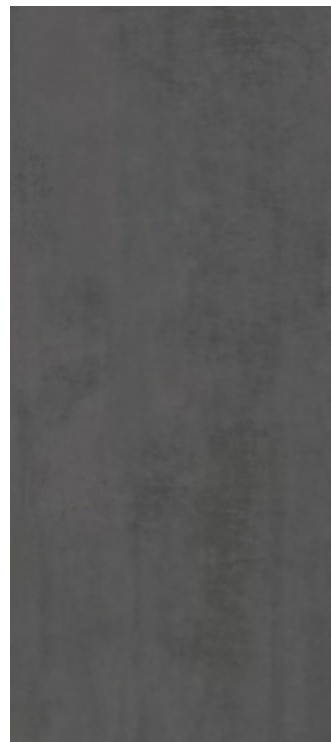
**K351 RT**  
**Rusty Flow**



**4299 UE**  
**Dark Atelier**



**K201 RS**  
**Dark Grey Concrete**



**K353 RT**  
**Charcoal Flow**



**K205 RS**  
**Black Concrete**





# Wood Natural Beauty

Wood have remained an on-trend worktop because of their choice of colours, shades and textures that bring warmth and natural appeal to any style of decor.

Qualities that are enhanced using endgrains, block woods and on-trend grey tones – and all of which can be found in our wood-inspired range of worktops.

K535 RW  
Gold Baroque Oak



K544 RW  
Hazel Silverjack Oak









K365 FP  
Coast Evoke Oak



K545 RW  
Vintage Silverjack Oak

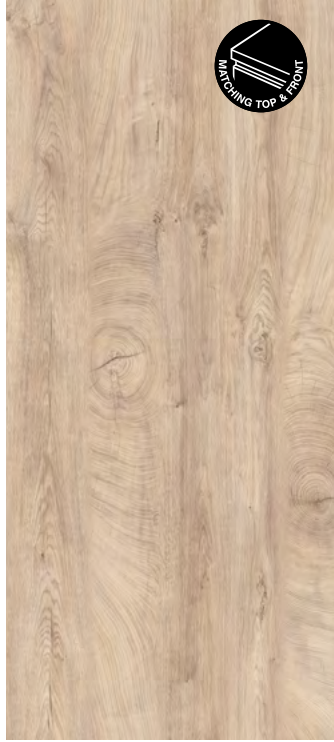




# Wood



K544 RW  
Hazel Silverjack Oak



K107 FP **Elegance**  
Endgrain Oak



K013 SU **Sand**  
Artisan Beech



5527 FP  
Stone Oak



K003 FP  
Gold Craft Oak



K365 FP  
Coast Evoke Oak



K091 FP  
Light Porterhouse Oak



K206 PE  
Porterhouse Walnut





**Key:**



MF Boards



Worktops  
Round Edge



Worktops  
Slim Line



Edgebanding



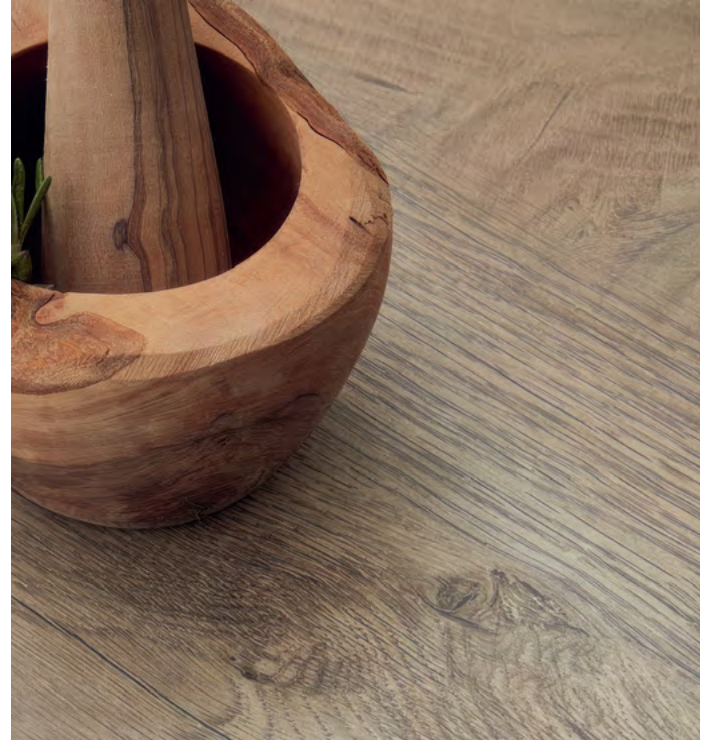
Worktops  
Square Edge



**K029 SU**  
**Linen Block Wood**



**K002 FP**  
**Grey Craft Oak**



**K105 FP**  
**Raw Endgrain Oak**



**K105 FP**  
**Raw Endgrain Oak**



**K092 FP**  
**Dark Porterhouse Oak**



**K030 SU**  
**Java Block Wood**



**K016 SU**  
**Carbon Marine Wood**





# Wood

K536 RW  
Amber Baroque Oak



K535 RW **Gold**  
Baroque Oak



K536 RW **Amber**  
Baroque Oak



K545 RW  
**Vintage Silverjack**  
Oak



K537 RW **Ristretto**  
Baroque Oak





K537 RW  
**Ristretto Baroque Oak**





# Slim Line Ultra Thin Look for an Extra Bold Impact

Clean lines, contemporary design and a fresh finish make our Slim Line collection the perfect complement for any style of kitchen.

Eight decors to choose from, these 12mm compact boards are heat and water resistant and are available with a matching core.

Slim Line worktops are as easy to maintain as they are pleasing to the eye.

**Available in 4100 x 1300 - 12mm  
and 4100 x 650 - 12mm**

## More decors available in our Slim Line Plus Collection:

Slim Line  
Plus Brochure:



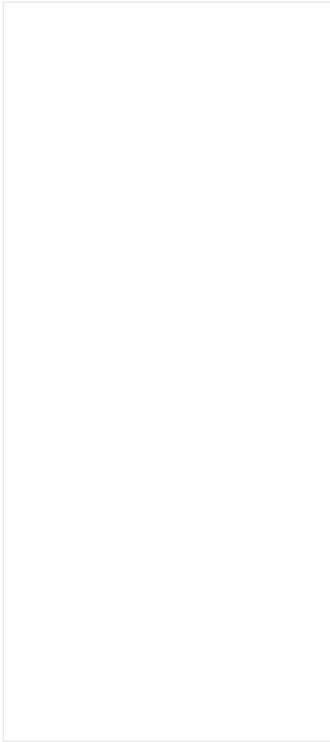
Slim Line  
Fitting Video:



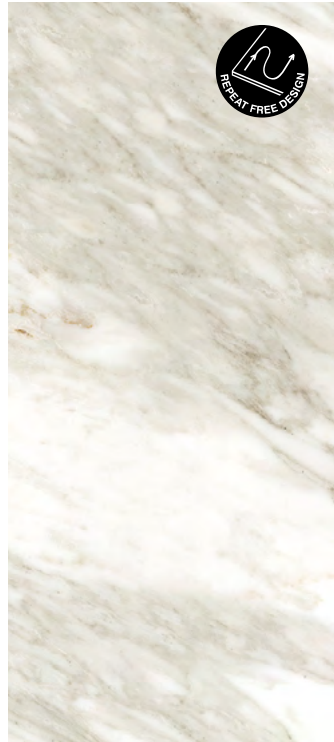
K023 SU  
Venato (white core)



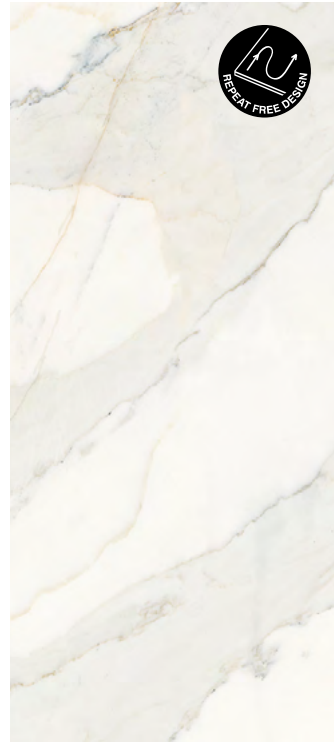
K551 SU  
Calacatta Olympus (white core)



8685 SU **Snow**  
White (white core)



K023 SU **Venato**  
Venato (white core)



K551 SU **Calacatta**  
Olympus (white core)



K367 PH **Cream**  
Navona (grey core)



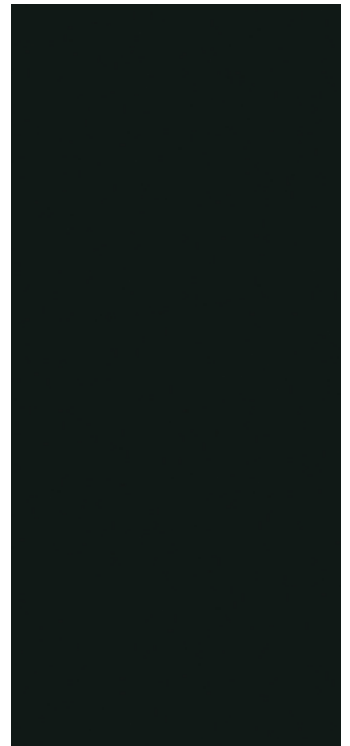
K028 SU **Portland**  
Portland (grey core)



K368 PH **Grey Atlantic**  
Marble (grey core)



0190 SL **Black**  
Black (black core)



0190 AF **Black**  
Black (black core)





# Why Choose Kronodesign®?

Our worktop collection is the culmination of design-led research and development; offering exclusive decors, including matching tops and fronts and no repeat designs. From the industry leading sustainable manufacturer, you can choose your worktop in complete confidence knowing that it will be the highlight of your kitchen.

All our worktops are inherently hygienic thanks to their built-in antibacterial qualities and are tested in accordance with ISO 22196:2011, the internationally recognised standard that evaluates antibacterial activity and the antibacterial properties of the surface.

Our worktops delay the growth of up to 99.9% of the most frequently found bacteria in kitchens, such as Streptococcus Faecalis and Escherichia Coli. The level of thought

we put into the appearance and construction of our worktops is matched by the care we take to ensure each one is more than capable of coping with the preparation, cooking, durability and presentation demands of a kitchen. You can rest assured that Kronodesign® quality, safety and performance are built into every worktop.

This is evident in the way our post-formed worktops are produced with a special HDF strip, which strengthens the front edge of the worktop. This technical innovation enhances the quality of the profile and increases the impact resistance of the board.

A special silicone strip is placed underneath the profiled edge along the entire worktop length, forming a drip barrier and protecting against water ingress, adding to performance and durability.

## Features



Stain resistant



Easy to clean



Hygienic



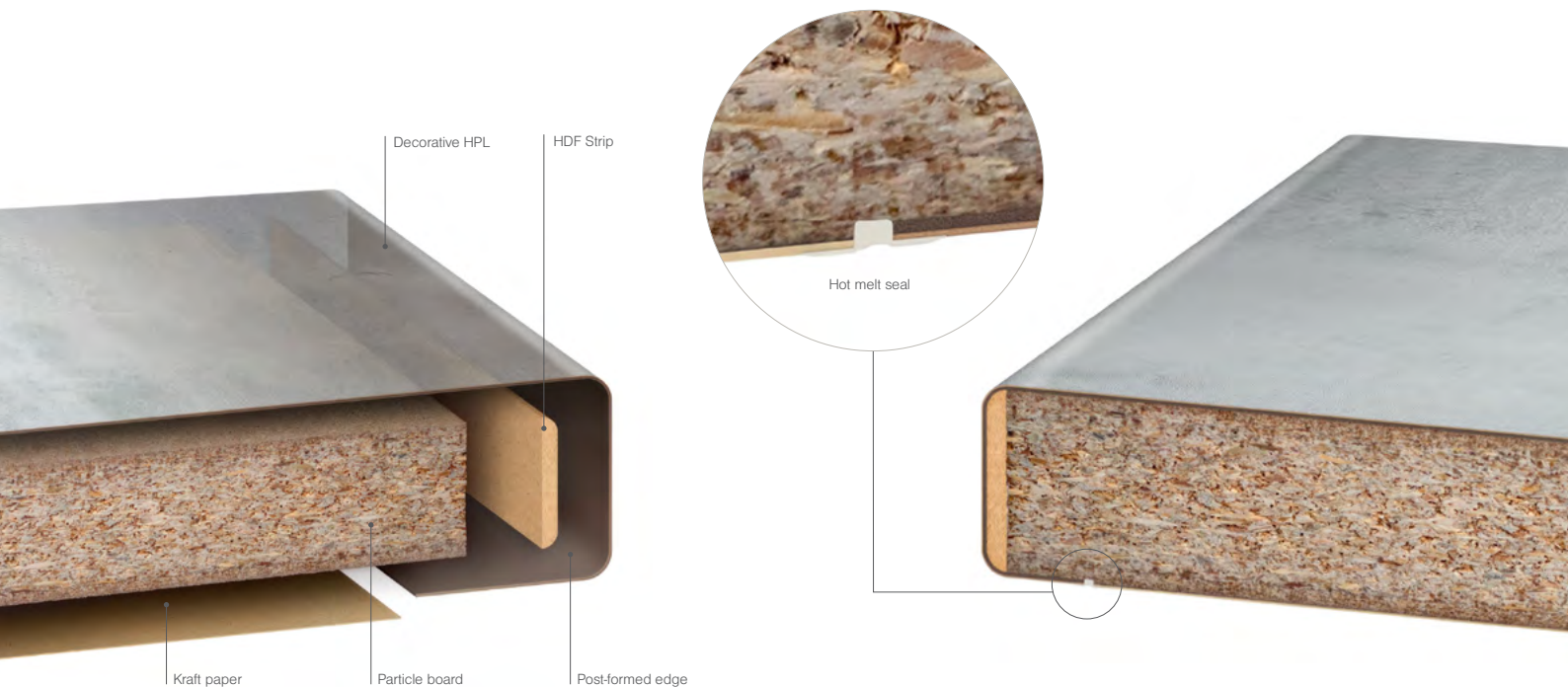
Heat resistant



Antibacterial



All of our worktops are tested and manufactured to Fira Gold Standard.





K369 PH  
Cloud Nebula



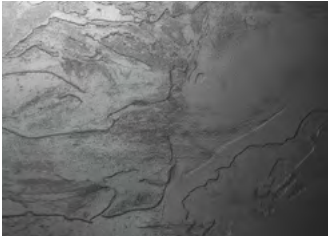


# UK Express Stock Summary

Made to order available upon request.

			Worktops		Breakfast bar		Slim Line		Upstands	Splashbacks	Accessories		Matching Front	
			ABS Square Edge	Post-formed	ABS Square Edge	Post-formed					ABS Edgings	HPL	Edgings	
Format (mm)			4100 x 600	4100 x 600	4100 x 900	4100 x 900	4100 x 1300	4100 x 650	4100 x 100	4100 x 640	1300 x 43	4110 x 1310	1200 x 38	2800 x 2070
Thickness (mm)			38	38	38	38	12	12	20	10	1.5	0.5/0.6/0.8	0.6	18
Profile Radius (mm)			1.5	3	1.5	3	-	-	-	-	-	-	-	-
Code	Texture	Decor												
4298	UE	Light Atelier		•		•			•	•		•	•	•
4299	UE	Dark Atelier		•		•			•	•		•	•	•
5527	FP	Stone Oak		•		•			•	•		•	•	•
7045	RS	Satin		•		•			•	•		•	•	
8685	RS	Snow White		•		•			•	•		•	•	
8685	SU	Snow White					•	•						
K002	FP	Grey Craft Oak		•		•			•	•		•	•	•
K003	FP	Gold Craft Oak		•		•			•	•		•	•	•
K013	SU	Sand Artisan Beech		•		•			•	•		•	•	•
K016	SU	Carbon Marine Wood		•		•			•	•		•	•	•
K023	SU	Venato		•		•	•	•	•	•		•	•	
K023	SQ	Venato		•		•			•	•		•	•	
K028	SU	Portland		•		•	•	•	•	•		•	•	
K029	SU	Linen Block Wood		•		•			•	•		•	•	
K030	SU	Java Block Wood		•		•			•	•		•	•	
K091	FP	Light Porterhouse Oak		•		•			•	•		•	•	
K092	FP	Dark Porterhouse Oak		•		•			•	•		•	•	
K093	SL	Grey Emperador Marble	•		•				•	•	•	•	•	
K095	SU	Light Terrazzo Marble		•		•			•	•		•	•	
K105	FP	Raw Endgrain Oak	•		•				•	•	•	•	•	•
K107	FP	Elegance Endgrain Oak	•		•				•	•	•	•	•	•
K200	RS	Light Grey Concrete	•		•				•	•	•	•	•	
K201	RS	Dark Grey Concrete		•		•			•	•		•	•	
K203	PE	Anthracite Granite		•		•			•	•		•	•	
K204	PE	Classic Granite		•		•			•	•		•	•	
K205	RS	Black Concrete		•		•			•	•		•	•	
K206	PE	Porterhouse Walnut		•		•			•	•		•	•	
K207	RS	Grey Galaxy		•		•			•	•		•	•	
K209	RS	Crema Limestone		•		•			•	•		•	•	
K210	PE	Black Flint		•		•			•	•		•	•	
K212	PA	Beige Royal Marble		•		•			•	•		•	•	
K213	RS	Dark Tivoli		•		•			•	•		•	•	
K214	RS	Light Tivoli		•		•			•	•		•	•	
K215	BS	White Dunes		•		•			•	•		•	•	
K217	GG	White Andromeda		•		•			•	•		•	•	
K217	GM	White Andromeda	•		•				•	•	•	•	•	
K218	GG	Black Andromeda		•		•			•	•		•	•	
K218	GM	Black Andromeda	•		•				•	•	•	•	•	
K349	RT	Silk Flow	•		•				•	•	•	•	•	•
K350	RT	Concrete Flow	•		•				•	•	•	•	•	•
K351	RT	Rusty Flow	•		•				•	•	•	•	•	•
K352	RT	Iron Flow	•		•				•	•	•	•	•	•
K353	RT	Charcoal Flow	•		•				•	•	•	•	•	•
K365	FP	Coast Evoke Oak	•		•				•	•	•	•	•	•
K367	PH	Cream Navona		•		•	•	•	•	•		•	•	
K368	PH	Grey Atlantic Marble		•		•	•	•	•	•		•	•	
K369	PH	Cloud Nebula		•		•			•	•		•	•	
K523	PE	Platinum Disk	•		•				•	•	•	•	•	•
K535	RW	Gold Baroque Oak	•		•				•	•	•	•	•	•
K536	RW	Amber Baroque Oak	•		•				•	•	•	•	•	•
K537	RW	Ristretto Baroque Oak	•		•				•	•	•	•	•	•
K538	PN	Dovetail Arosa	•		•				•	•	•	•	•	•
K539	PN	Fossil Arosa	•		•				•	•	•	•	•	•
K540	PN	Grey Albus	•		•				•	•	•	•	•	•
K544	RW	Hazel Silverjack Oak	•		•				•	•	•	•	•	•
K545	RW	Vintage Silverjack Oak	•		•				•	•	•	•	•	•
K549	SL	Sand Venera	•		•				•	•	•	•	•	
K550	SL	Dove Venera	•		•				•	•	•	•	•	
K551	SU	Calacatta Olympus	•		•		•	•	•	•	•	•	•	
K552	SU	White Iceberg Marble	•		•				•	•	•	•	•	
K553	SU	Galaxus	•		•				•	•	•	•	•	
0190	AF	Black					•	•						
0190	SL	Black					•	•						

# Textures



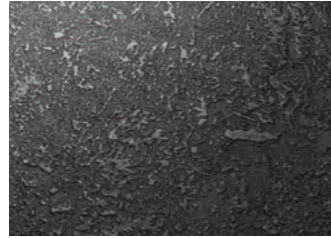
## Slate SL

Deep slate texture that reflects the distinctive look and feel of weathered stone.



## Fine Pore FP

A understated delicate wood pore that refines the decor.



## Rough Stone RS

Soft riven slate type texture. Suitable for natural stone decors.



## Pearl PE

A subtle, burnished surface detail.



## Used Effect UE

A burnished surface finish, that gives an extra degree of patina to stone and metal decors.



## Super Matt SU

Texture combining matt effect with smooth, high-grade optics for a resplendent appearance.



## Super Quality Gloss SQ

A superior gloss surface developed for worktops to offer improved scratch resistance and durability.



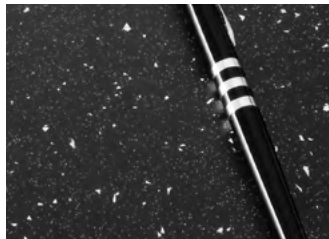
## Authentic Fine AF

Velvety texture with a luxurious soft-touch tactile effect and an anti-fingerprint finish.



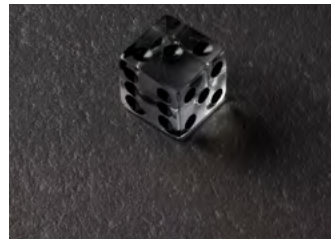
## Glitter Gloss GG

High gloss surface, enhanced with a fine amount of shiny real aluminium bits and sparkling glitter finish suitable for stone decors.



## Glitter Matt GM

This elegant matt texture, combining a soft, silky touch with the eye-catching and subtle sparkle of aluminium flecks.



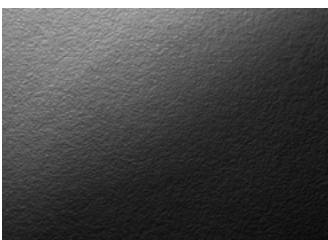
## Palazzo Touch PH

Inspired by vintage marble and soapstone textures, the dual gloss surface replicates natural cracks and indentations with a burnished, waxy touch.



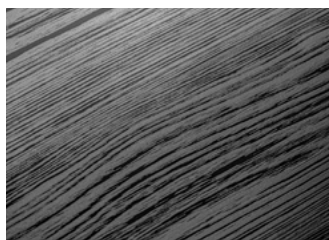
## Rust RT

The stucco texture echoes the distressed appearance of concrete and metal. It has a worn character that is fully on-trend with the urban look.



## Pluton PN

A versatile, non-directional texture with a matt effect. It is ideal for both vertical and horizontal surfaces and enhances the look and feel of textiles, stone, and marble decors.



## Rift Wood RW

Linear texture with matt and gloss areas, giving the most diverse wood designs a very authentic feel and high-value appearance.



# Caring for Your Worktop

## Care for your health

The proven and certified antibacterial properties of our worktops mean more hygienic surfaces in the kitchen, helping create a safer and healthier environment. Worktops that are designed and made with your well-being in mind.

## Care for your worktop

Kronodesign® worktops are easy to maintain: simply use a damp cloth and a mild detergent or non-abrasive cleaner to keep the surfaces clean and hygienic. Stubborn stains should be removed immediately (the use of abrasive cleaners should be avoided).

While your worktop is resistant to high temperatures, you should always put hot objects onto heat-resistant mats or trivets. Our gloss finish will enhance and complement the effect of the decor; however, it is advisable to take extra care with gloss finish worktops as they are more prone to marking. Try to avoid sliding objects across the surface of the laminate. To prevent damaging the surface, always use a chopping board when preparing food.

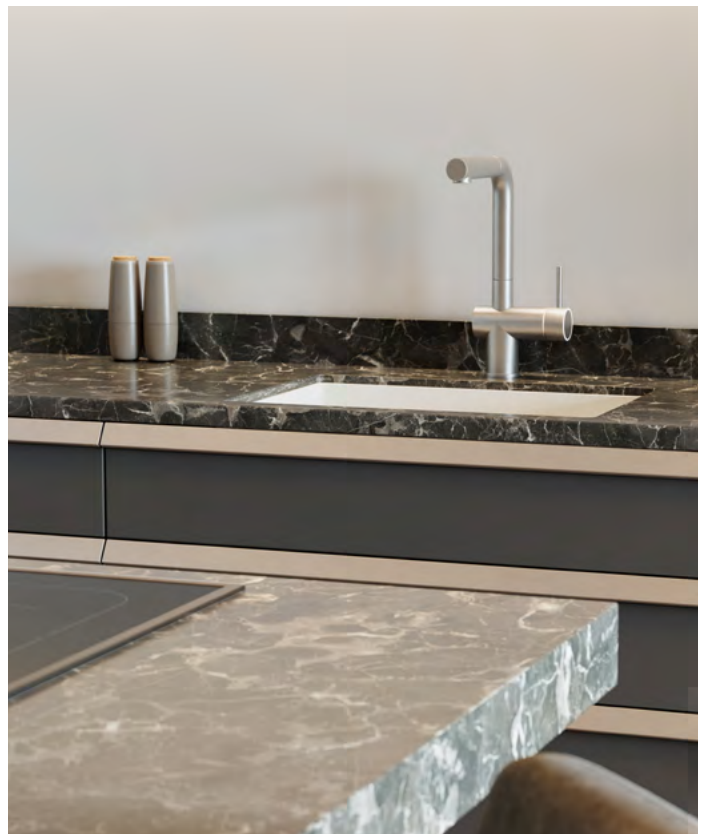
Full details for care and maintenance can be found in the Care Guide included with every worktop or discuss this with your retailer.

## Sample swatches

We are happy to supply a sample of any of the Kronodesign® decors.

Please visit: [kronospan.com](http://kronospan.com)

K553 SU  
Galaxus





We are a member of the **Economic Chamber of Forest Stewardship Council®**.



K537 RW  
Ristretto Baroque Oak

# Sustainability

## Ensuring renewable and sustainable resources.

To reinforce our position as a leader rather than a follower, we, along with our suppliers, are striving to achieve the lowest possible environmental impact in all areas of our businesses – we want to **Make Wood Work** by getting the highest possible yield from our input materials.

We apply the cascade use of wood by first prioritizing post-consumer recycled timber, then using sawmill residues and co-products to produce technically advanced, engineered products.

Only when timber is not suitable to be used as a raw material for our products is it used as a fuel for energy production on our site, offering a much more sustainable alternative to fossil fuels.

We constantly monitor our use of water and energy to identify opportunities to reduce consumption.

## Investing in a more sustainable future.

To accelerate our progress toward Net Zero emissions targets, we are continuously investing in new, more efficient equipment and machinery.

We have planned a number of large scale CapEx projects over the coming years with significant sustainability benefits.

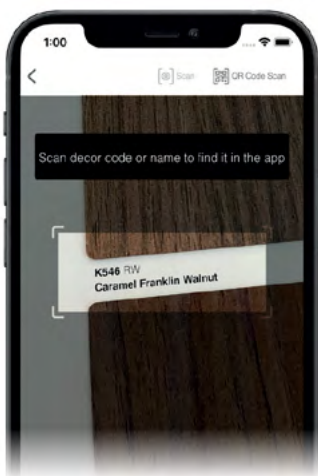
This includes infrastructure upgrades which will enable the further decarbonisation of our operations and the local economy to implement further low-carbon technologies.

## Sustainable forestry to lower environmental impact.

The wood-based panels we make and supply are certified by the Forest Stewardship Council® (FSC® License code: FSC-C018728).

This gives the certified assurance that our products are made of recycled materials well-managed FSC®-certified forests, and other controlled sources.





**Get the Kronodesign® App**

Scan decor code or names with our Kronodesign® mobile app to find the available product.

**Kronospan Limited** Chirk, Wrexham, LL14 5NT

Phone: 01691 773361  
Email: [sales@kronospan.co.uk](mailto:sales@kronospan.co.uk)  
Internet: [kronospan.com](http://kronospan.com)